

Quality that pays off.

Design features of the Eyelike™ precision M22

JENOPTIK's range of digital camera backs has been extended by the Eyelike™ precision M22 with 22-million-pixel capability, a system designed to fulfill all working standards and master all challenges in applications of professional photography.

CCD-sensor:	Dalsa FTF 4052, 48 x 36 mm ² , active two-stage Peltier cooling, RGB mosaic filter (Bayer pattern), fullframe sensor technology
Dimensions:	76 x 90 x 70 mm ³
Pixel size:	9 x 9 µm ²
Resolution:	22 million pixels 5344 x 4000 pixels (1-shot) 5344 x 4000 pixels for true color (4-shot) 10688 x 8000 pixels for true color (16-shot)
File size:	61 MB (1-shot/4-shot 24-bit) 122 MB (1-shot/4-shot 48-bit) 489 MB (16-shot 48-bit)
Aspect ratio:	4:3
Color depth:	16 bits per color, true color without color interpolation in 4-shot & 16-shot mode
Dynamic range:	12 f-stops
Capture rate:	High quality 1-shot: about one shot every 2.2 seconds
Exposure times:	1/10,000 to 32 seconds
Lighting conditions:	All lighting conditions
Software:	Autonomous Macintosh software, memory-optimized, supports ICC profiles, batch-processing capability, workflow-oriented further processing, available in „Eyelike™ capture basic“ and „Eyelike™ capture pro“ version
Computer connection:	Via 10 m Firewire cable
Adaptions:	Hasselblad V; Mamiya 645AFD; Contax 645; Rollei 6008 integral; Rollei 6008E; Rollei 6003 professional; Rollei 6001 professional; and Hasselblad adapter for working with all types of standard available view cameras; further adaptions on request
System requirements:	Apple G4 with AGP graphic card or G4 Powerbook or later; Mac OS 10.3 or higher; Firewire interface; memory on request



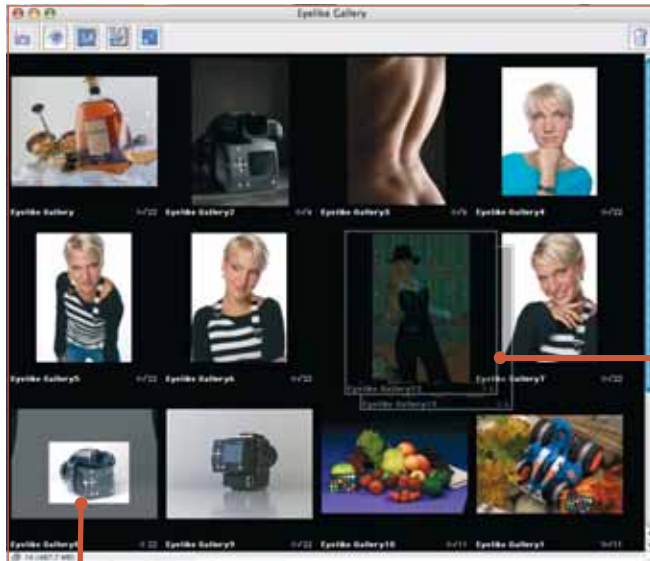
The Eyelike™ precision M22 features: Excellent performance in processing and image quality, handling and other aspects.

For example, it provides active sensor cooling to reduce sensor noise to a minimum level. Sensor cooling combined with microscanning guarantees brilliant image quality.



The decisive benefit: Eyelike™ software.

There is unanimous consent among Eyelike™ camera users that its comprehensive perfected Eyelike™ software keeps tipping the scales in favour of this camera type where buy/no-buy decisions are made. Integrated for a modern digital workflow, this software guarantees excellent color quality. To make the photographer's work easier and more efficient, it includes options for saving all image parameter settings such as gradation curves, gray balance, filter set-ups and desired image segments. In addition, it provides a clearcut, fast live-image for selecting and focusing a desired image segment at a professional camera back without having to operate the camera's exchange slider in the usual way.



Preview of a selected image segment.

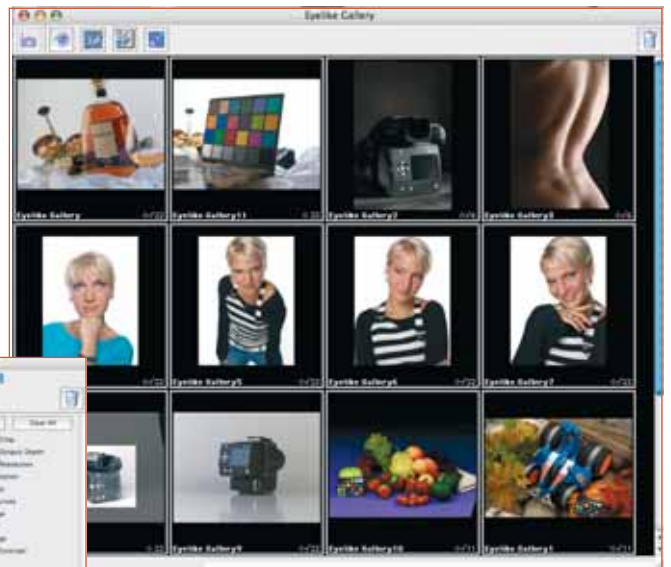
Working like on a light table.

In both software versions, i.e. in **Eyelike™ capture basic** and **Eyelike™ capture pro**, you are able to work on a virtual light table. The gallery screen provides an express overview of the images that have been shot and you may sort these visually by shifting a thumbnail pointer in a desired manner. In addition, you may use the thumbnails to obtain information about your currently valid settings.

Sorting and shifting selected images.

Transferring image settings to any other image.

Practical photography jobs typically require repetitive working procedures. This is where the „Eyelike™ capture pro“ software supports you in a unique way: You can reprocess a particular image and assign your changes to a randomly selectable quantity of other images with a subsequent mouse-click.



Assigning image parameters.

JENOPTIK Laser, Optik, Systeme GmbH
Business Unit Sensor Systems

Goeschwitzer Str. 25
D-07745 Jena, Germany
Phone: +49 3641 65-2136
Fax: +49 3641 65-2144
eyelike@jenoptik.com
www.eyelike.com

Your direct Eyelike™ sales agent:

